

Tasowheel provides maintenance and repair services throughout the entire life cycle of our products. Tasowheel actuators are well known for their long life cycle and reliability. Our goal is to ensure efficient and uninterrupted production for our customers.

Care throughout the Life Cycle

Original spare parts, maintenance and repair services from the manufacturer

Examples of older Tasowheel actuators:

Motorized dilution actuators

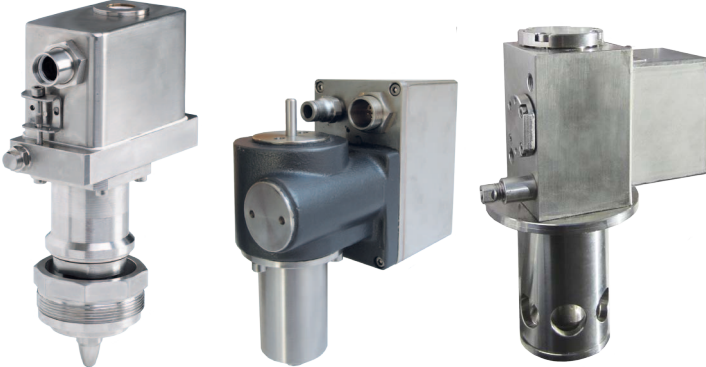


IDA20
rotary dilution actuator and valve

DLC-10
rotary dilution actuators

DLCP-20

Steam actuators

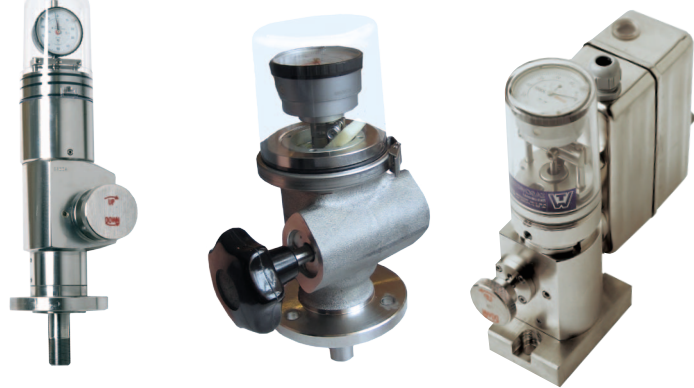


EMA15
steam control actuators

EMA1000

STC900

Headbox control actuators



91/2T
slice micro actuators

KVA 311, KATSA

88MAP, JAPA

Coater profiling actuators



CWC-3000
coater profiling actuators

CWC-3500

95CMA



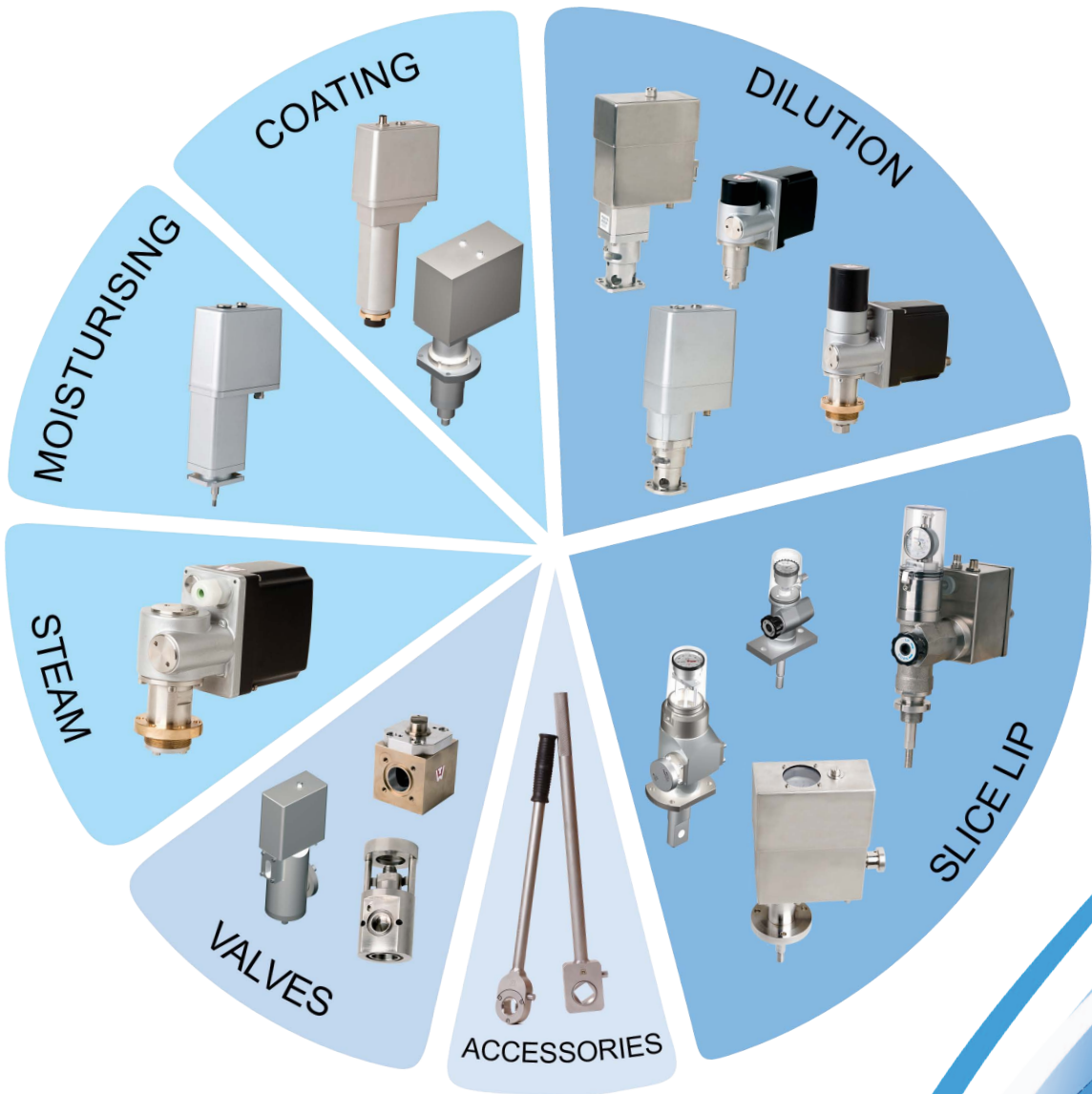
Tasowheel Systems Oy
Hepolamminkatu 27 B
FI - 33720 Tampere
Finland

Tel. +358 207 757 400
Fax +358 3 317 8111
www.tasowheel.fi



*Original CD Profiling Components
Over 30 years' Experience*

Tasowheel CD Actuators and Valves for the Paper and Board industry



Dilution



RDA-20/100 Rotary Dilution Actuator for headboxes

Operating torque: Max 20 Nm
Output: 100 °
Spacing in one row: Min 60 mm
Materials: Adapter, coupling and cover AISI 316
Protection class: IP 67 (with purge air)
Resolution < 0,01°



RDA-20/6 Rotary Dilution Actuator for headboxes

Operating torque: Max 20 Nm
Output: 100 °
Spacing in one row: Min 60 mm
Materials: Adapter and coupling part AISI 316. Cover aluminium with active anticorrosive coating.
Protection class: IP 65 (without purge air).
Resolution < 0,01°



RDA-10/90 Rotary Dilution Actuator for headboxes

Operating torque: Max 10 Nm
Output: 90 °
Spacing in one row: Min 60 mm
Materials: Lower frame AISI 316, upper frame aluminium with active anticorrosive coating.
Protection class: IP 65
Resolution < 0,05°



LDA-1520 Linear Dilution Actuator for headboxes

Operating force: Max 1500N
Output: 18 mm
Spacing in one row: Min 60 mm
Materials: Lower frame AISI 316, upper frame aluminium with anticorrosive coating.
Protection class: IP 65
Resolution <10 µm

Dilution Valves



RDV Rotary Dilution Valve for headboxes

Max pressure: 10 bar
Spacing in one row: Min 60 mm
Materials: AISI 316



LDV Linear Dilution Valve for headboxes

Max pressure: 10 bar
Spacing in one row: Min 60 mm
Materials: AISI 316



Edgeflow Motorized edgeflow valve for headboxes

Spacing in one row: Min 105 mm
Materials: AISI 316
Protection class: IP 65
Resolution <0,5 µm

Tasowheel Quality
- ISO 9001 and ISO 14001

The Tasowheel Group was one of the first Finnish technology industry companies to be certified according to the ISO 9001 system.

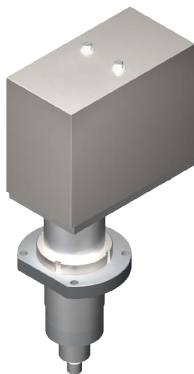
We produce safe and guaranteed solutions whose operation our customers and partners can trust.

Coating



CA-5000 Linear actuator for slice lip of coaters and headboxes

Operating force: 5000N
Output: 10 mm
Spacing in one row: Min 60 mm
Materials: Frame and cover aluminium with active anticorrosive coating.
Protection class: IP 65
Resolution <0,3 µm



Forte- 45005 Linear actuator for slice lip adjusting of headboxes

Operating force: 45000N
Output: 5 mm
Spacing in one row: Min 150 mm
Materials: AISI 316
Protection class: IP 65
Resolution <0,2 µm

Slice Lip



ML-5005 Manual Linear slice lip actuator for headboxes

Operating force: 5000N
Output: 5 mm
Spacing in one row: Min 60 mm
Materials: Housing AISI 316, plastic cover for dial gauge
Protection class: IP 65
Resolution <10 µm



ML-5010 Manual Linear slice lip actuator for headboxes

Operating force: 5000N
Output: 10 mm
Spacing in one row: Min 60 mm
Materials: Housing AISI 316, plastic cover for dial gauge
Protection class: IP 65
Resolution <10 µm



ML-25005 Manual Linear slice lip actuator for headboxes

Operating force: 25000N
Output: 5 mm
Spacing in one row: Min 100 mm
Materials: Housing AISI 316, plastic cover for dial gauge
Protection class: IP 65
Resolution <10 µm



Forte-5010 Motorized linear actuator for slice lip of headboxes

Operating force: 5000N
Output: 10 mm
Spacing in one row: Min 65 mm
Materials: Housing AISI 316, plastic cover for dial gauge
Protection class: IP 67 (with purge air)
Resolution <0,35 µm



SL-10005 Linear Slice Lip actuator for headboxes

Operating force: 10000N
Output: 5 mm
Spacing in one row: Min 150 mm
Materials: Frame and cover AISI 316
Protection class: IP 67 (with purge air)
Resolution <0,2 µm

Ratched Tools



The Drive Ratchet Tool is a handy genaral-purpose tool designed to replace lange handwheels in paper machines, coolers, supercalenders etc.

Materials: AISI 316

Available in various sizes and designs.

CD Actuators General features

Actuator control: Discrete I/O or ModBus, except for RDA-10/90: Modbus, STA-1015: Encoder system.

Temperature range: +5° to +75°C, except for STA-1015: +5° to +125°C, RDV and LDV: +20° to +80°C and Edgeflow: +20° to +50°C.

Motor: Stepping motor with driver, except STA-1015: Synchronous motor.

Steam



STA-1015 Linear actuator for steamboxes

Operating force: 1000N
Output: 10 mm
Spacing in one row: Min 60 mm
Materials: Housing anodized aluminium, AISI 316.
Protection class: IP 67 (with purge air)
Resolution <5 µm

Moisturising



Alfa-0260 Linear actuator for moisturising systems

Operating force: 200N
Output: from 10 to 60 mm
Spacing in one row: Min 60 mm
Materials: Frame and cover aluminium with active anticorrosive coating.
Protection class: IP 67 (with purge air)
Resolution <5 µm