



QUALITY ROLLS FOR YOUR BUSINESS.

TC | ROLLS &
COVERS

TC | Rubber
Division

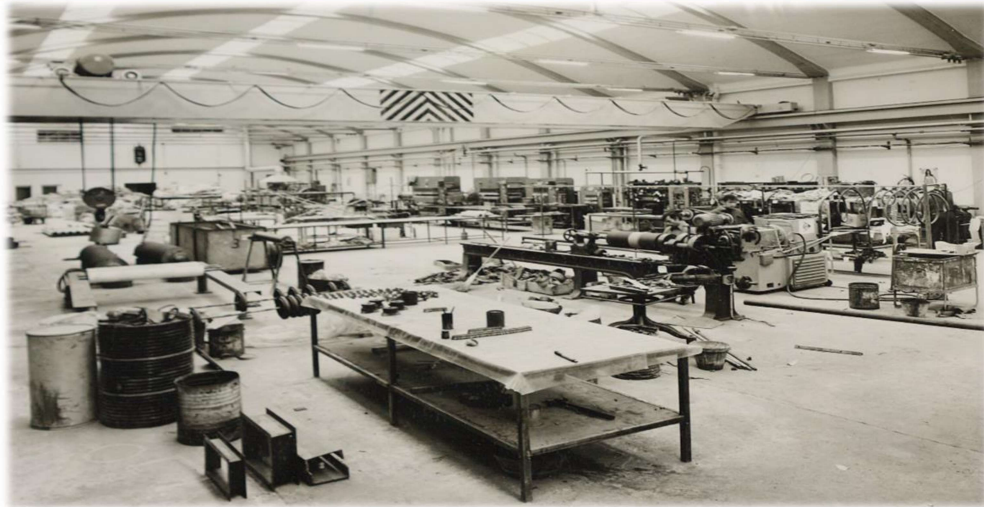
TC | Composites
Division

TC | Polyurethane
Division

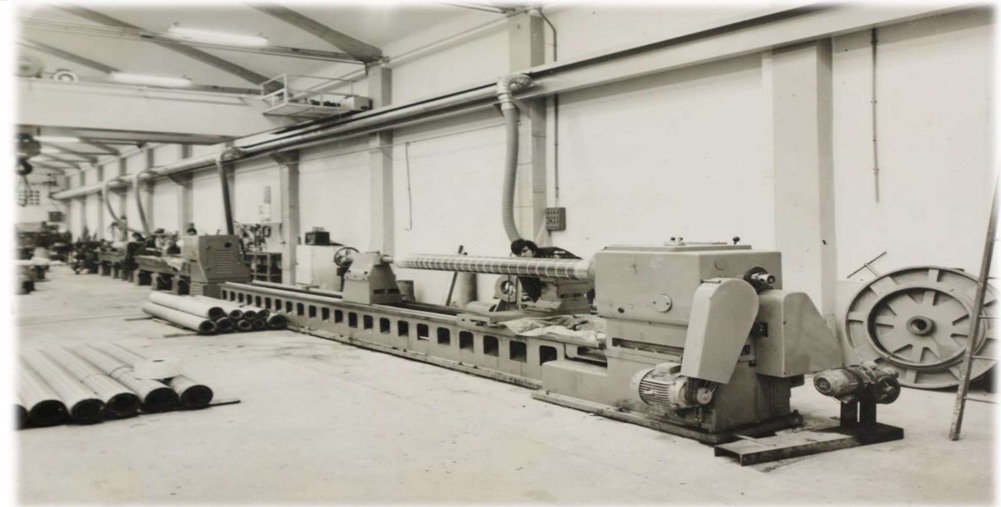
TC | Thermal
Spray
Division



THE COMPANY.



Rubber manufacture plant in year 1961.



Roller turning in year 1961.

Tecno-Caucho Rolls & Covers was created in year 1961. During its first stage the focus was on the manufacturing of technical components and natural and synthetic rubber rollers. In year 1972, it relocated to the location it is to this day.

THE COMPANY.



TecnoCaucho workers in year 2018.



Main warehouse in year 2018.

Nowadays, TecnoCaucho Rolls & Covers has more than 12,000 m² of facilities and is the Spanish company with the largest production capacity in complete rolls, and its covers include rubber, polyurethane, composite materials and HVOF and Plasma.

LOCATION.



We are located in Valencia, the third largest city of Spain.

PRODUCTION CAPACITY.

Production capacity of rollers:

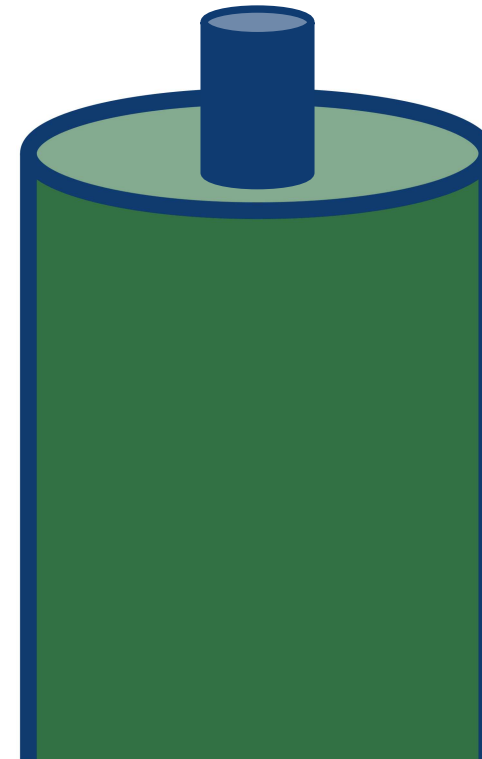
Maximum length:	12 meters
Maximum diameter:	2,5 meters (1)
Maximum weight:	64 tons

Roller grinding capacity:

Maximum length:	12 meters
Maximum diameter:	2,5 meters
Maximum weight:	64 tons (on bearings)

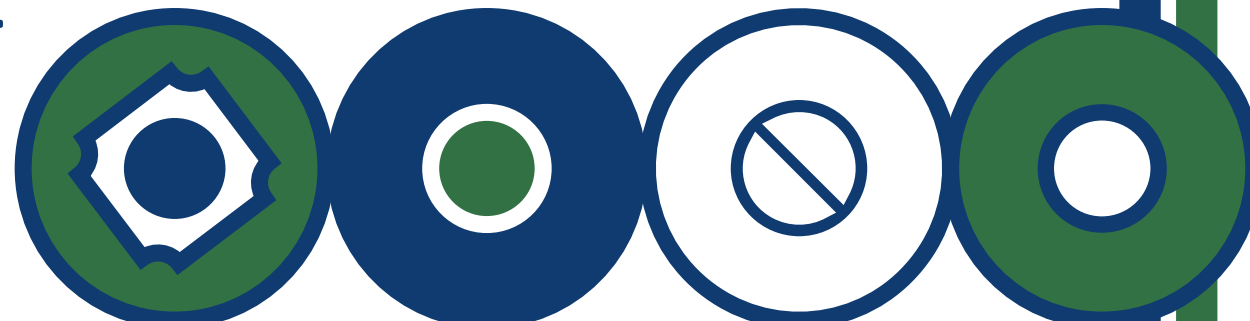
Balanced rollers:

Maximum length:	12 meters
Maximum weight:	30 tons



RANGE OF SERVICES.

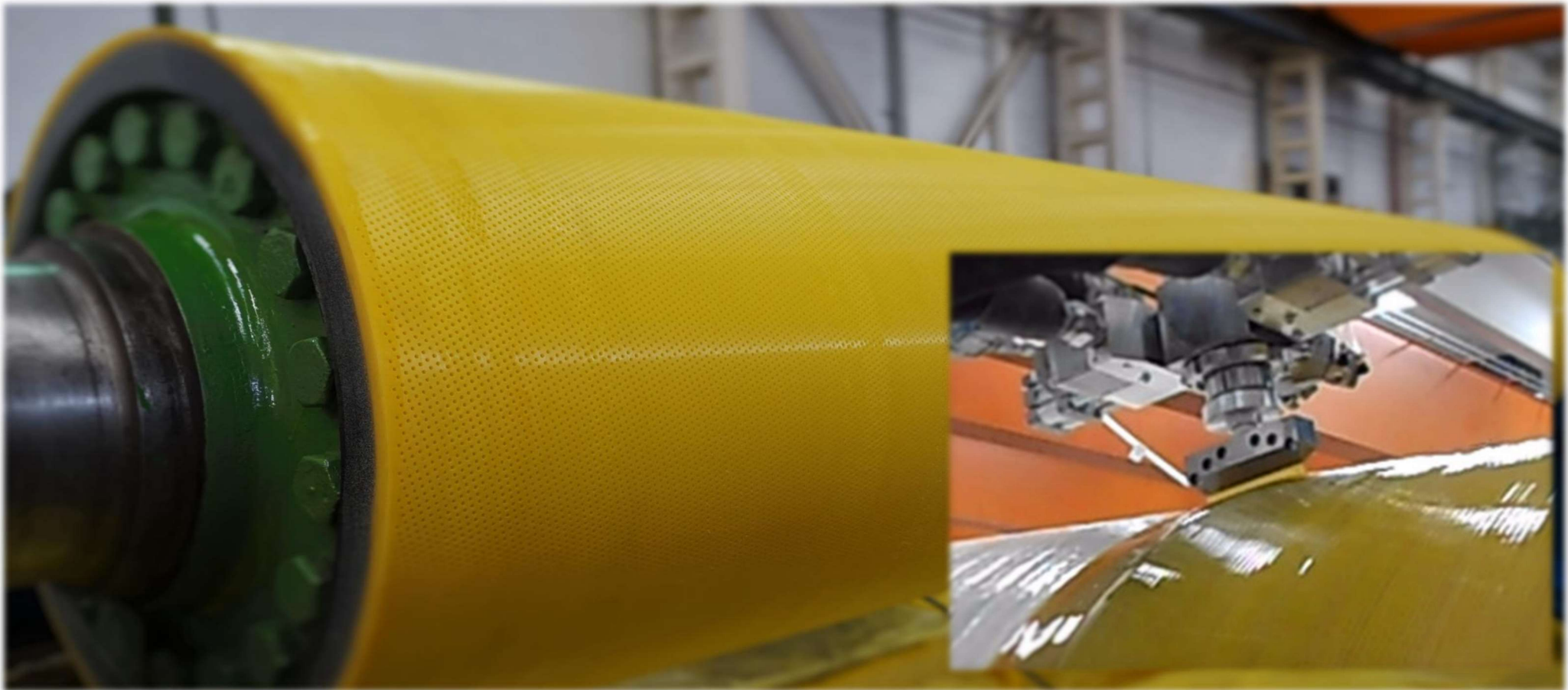
- ✓ **REPAIR AND CONSTRUCTION OF SHELLS.**
- ✓ **TURNING, GRINDING AND SUPER-FINISHING SERVICE.**
- ✓ **DRILLING & GROOVING SERVICE FOR SUCTION PRESS ROLLS AND SHELLS.**
- ✓ **DYNAMIC BALANCING.**
- ✓ **REPAIR OPERATIONS FOR ROLLS.**
- ✓ **COMPLETE MAINTENANCE SERVICE.**



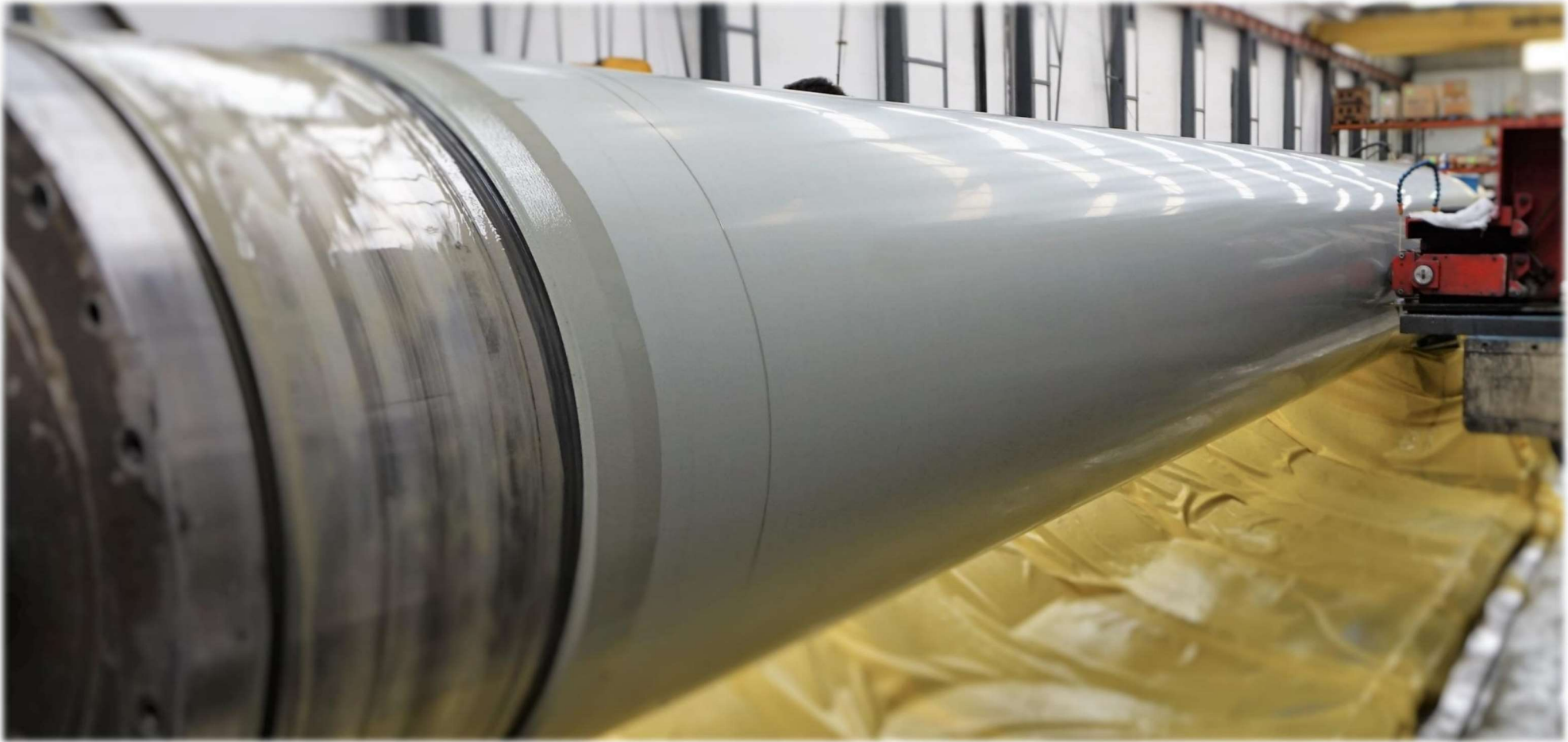
RUBBER COVER.



POLYURETHANE COVER.



COMPOSITE COVER.



MAXIDRY SYSTEM.

Tecno-Caucho develop a special family of covers. These covers are created to improve the paper quality at the same time that we are reducing the maintenance cost.

This is possible because we developed the best cover quality to support the wire wear in contact with the Yankee dryer.



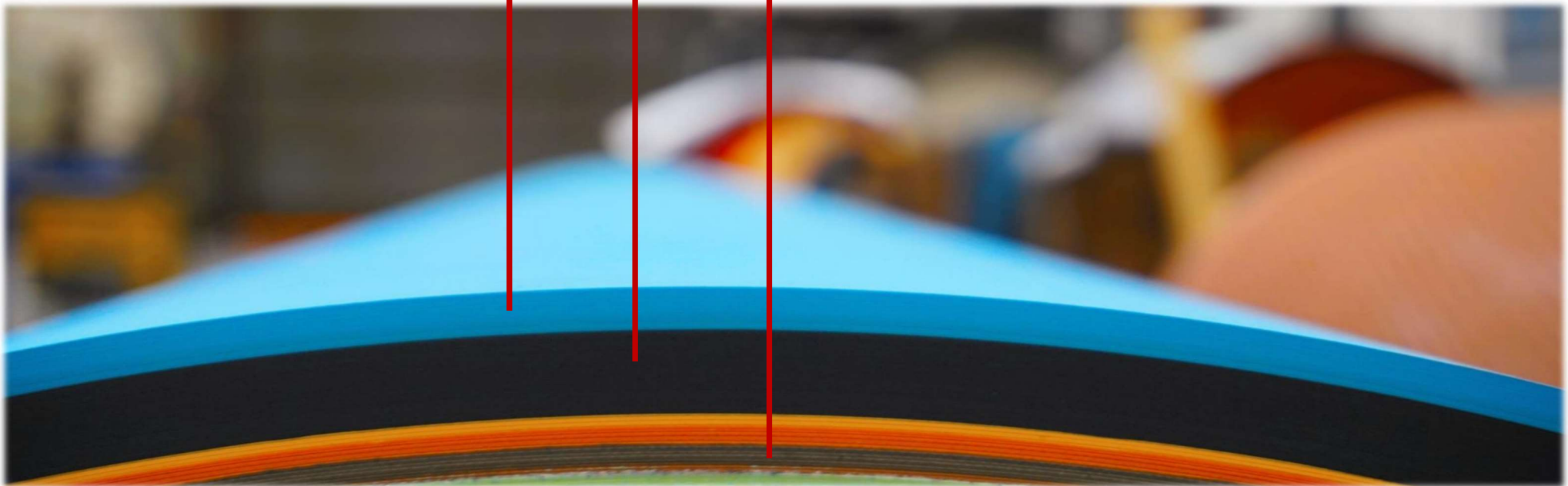
MAXIDRY SYSTEM.

Triplex Multilayer.

Hard layer contact surface.

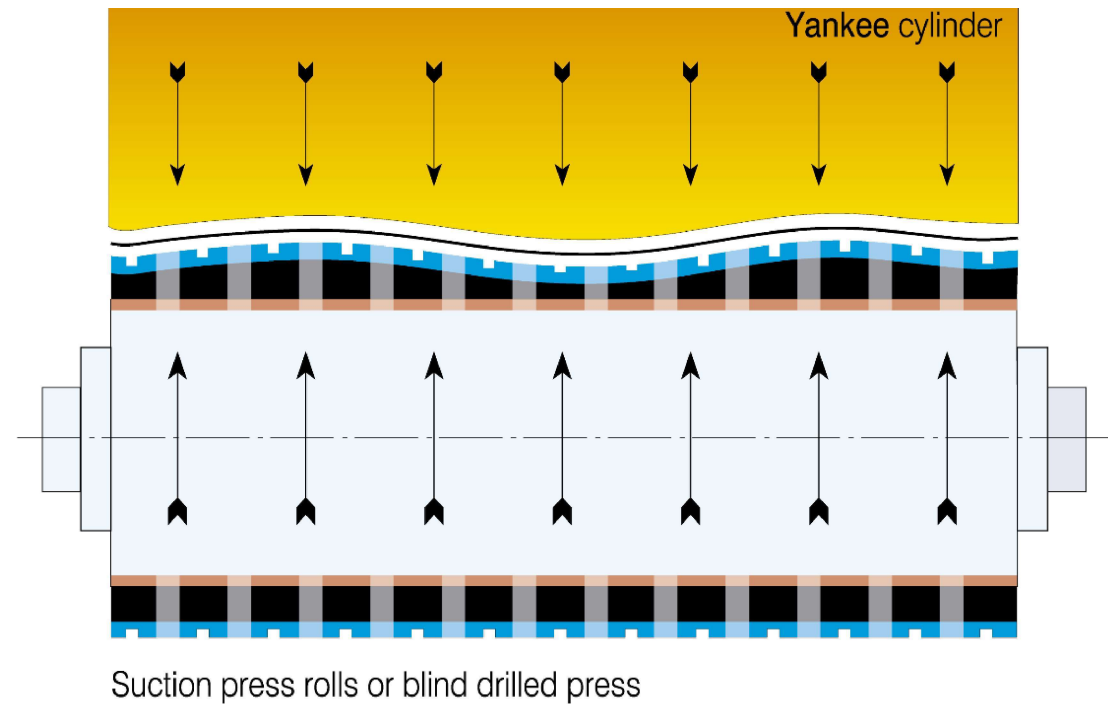
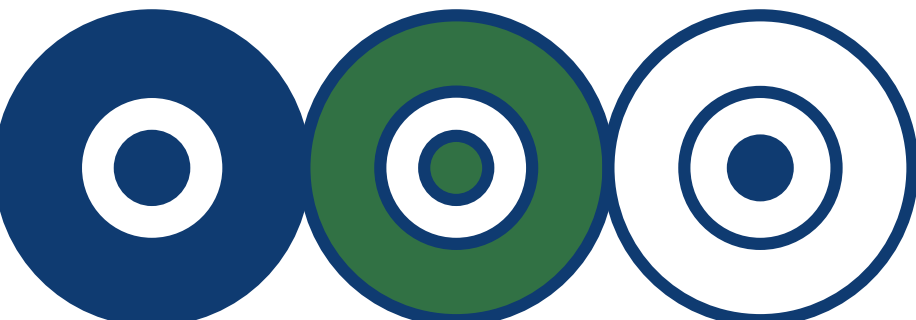
Soft layer with maximum elongation.

Bonding layer.



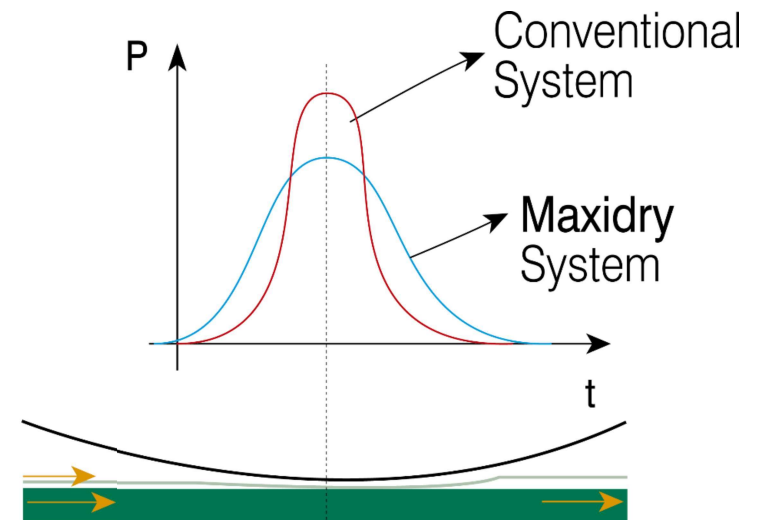
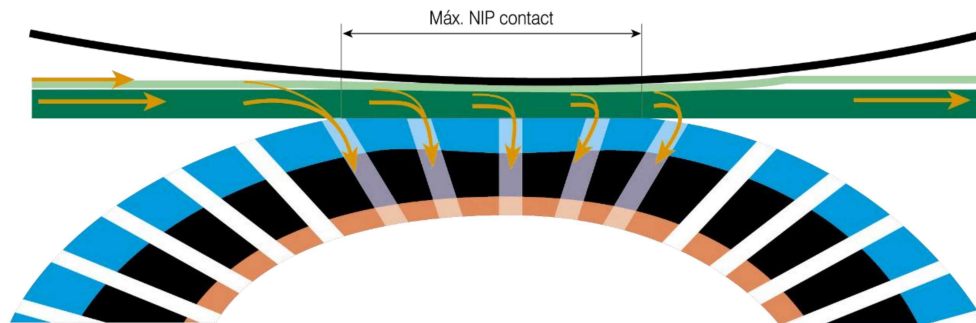
MAXIDRY: SAVINGS & DRYING EFFICIENCY.

- ✓ Higher filter life time.
- ✓ Better paper quality.
- ✓ Increase the machine speed.
- ✓ Longer life time between grindings.

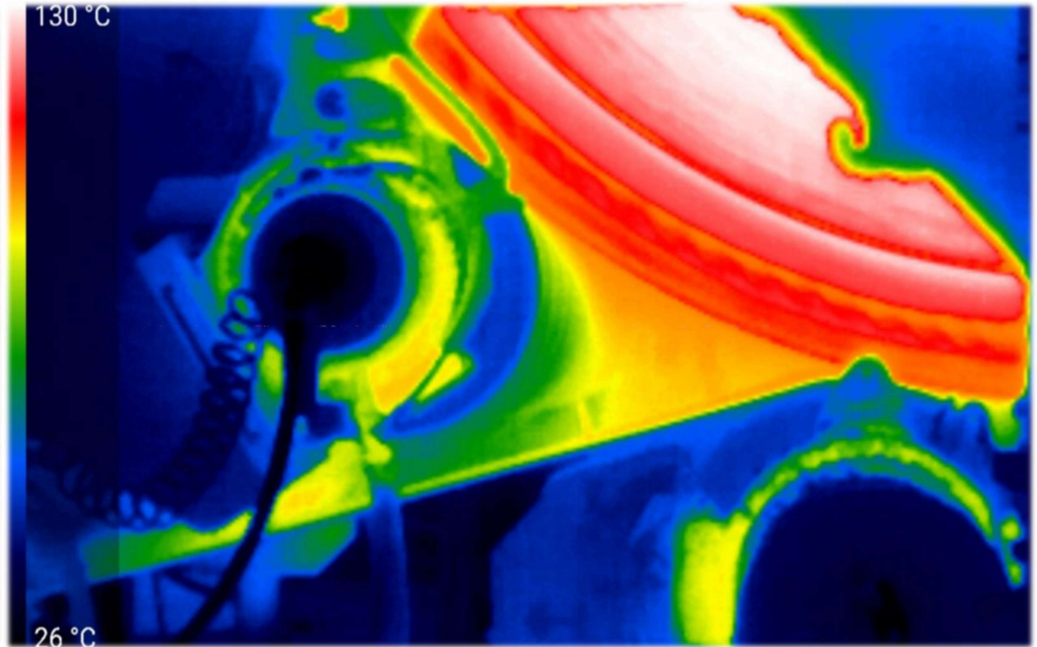
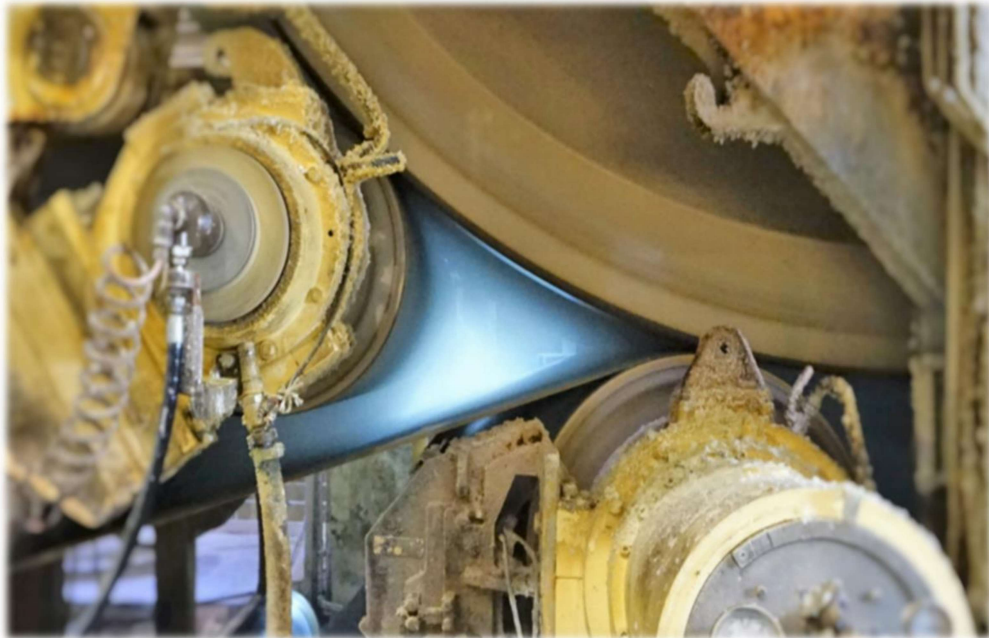


MAXIDRY: SAVINGS & DRYING EFFICIENCY

- ✓ Increase the drying capacity.
- ✓ Short investment revenue.

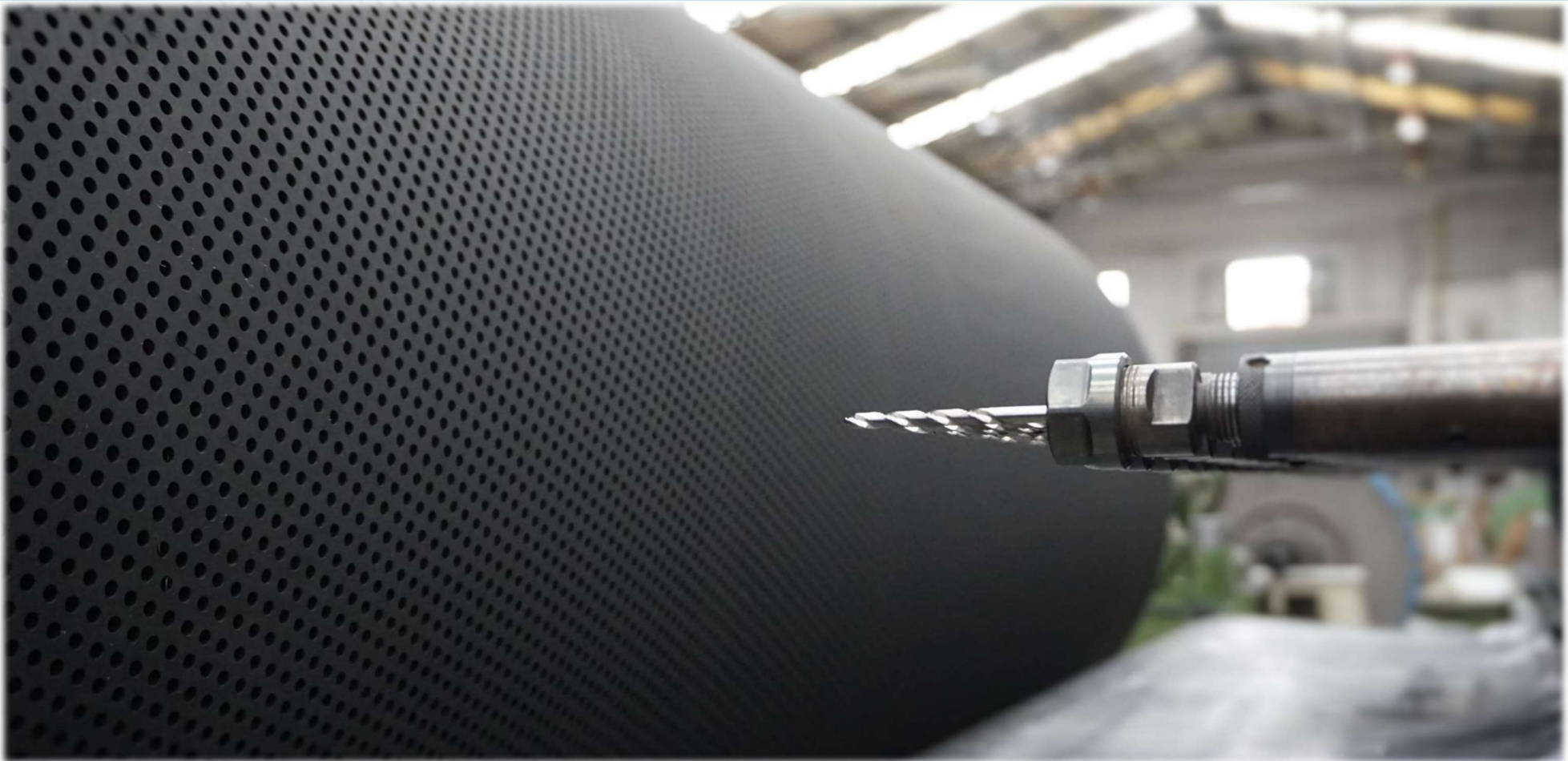


MAXIDRY: SAVINGS & DRYING EFFICIENCY.



✓ *Less energy consumption.*

DRILLING OPERATION.



CNC BALANCING OPERATION.



HVOF & PLASMA COATING INSTALLATION.

